

## Structure and Governance of Academic Groups of the University

<b>Approving authority</b>	University Council
<b>Approval date</b>	4 December 2017 (5/2017 meeting)
<b>Advisor</b>	Michele Britton   Head, Corporate Governance <a href="mailto:M.Britton@griffith.edu.au">M.Britton@griffith.edu.au</a>   (07) 373 57190
<b>Next scheduled review</b>	2019
<b>Document URL</b>	<a href="http://policies.griffith.edu.au/pdf/Structure%20and%20Governance%20of%20Academic%20Groups%20of%20the%20University.pdf">http://policies.griffith.edu.au/pdf/Structure and Governance of Academic Groups of the University.pdf</a>
<b>TRIM document</b>	2017/0000455
<b>Description</b>	<p>This document sets out the structure and governance arrangements for academic Groups of the University and details positions within those Groups with formal roles and responsibilities set down in University policies.</p> <p>The Appointment of Academic Managers document details the procedures and delegated authorities for appointment of academic manager positions, including acting appointments.</p> <p>The Staffing Delegations: Academic Groups document schedules the delegated authorities to make staffing decisions within academic Groups.</p>

### Related documents

[Appointment of Academic Managers](#)

[Performance Management of Academic Managers Policy & Procedures](#)

[Program Approval and Review](#)

[Research Centres and Institutes Policy](#)

[Staffing Delegations: Academic Groups](#)

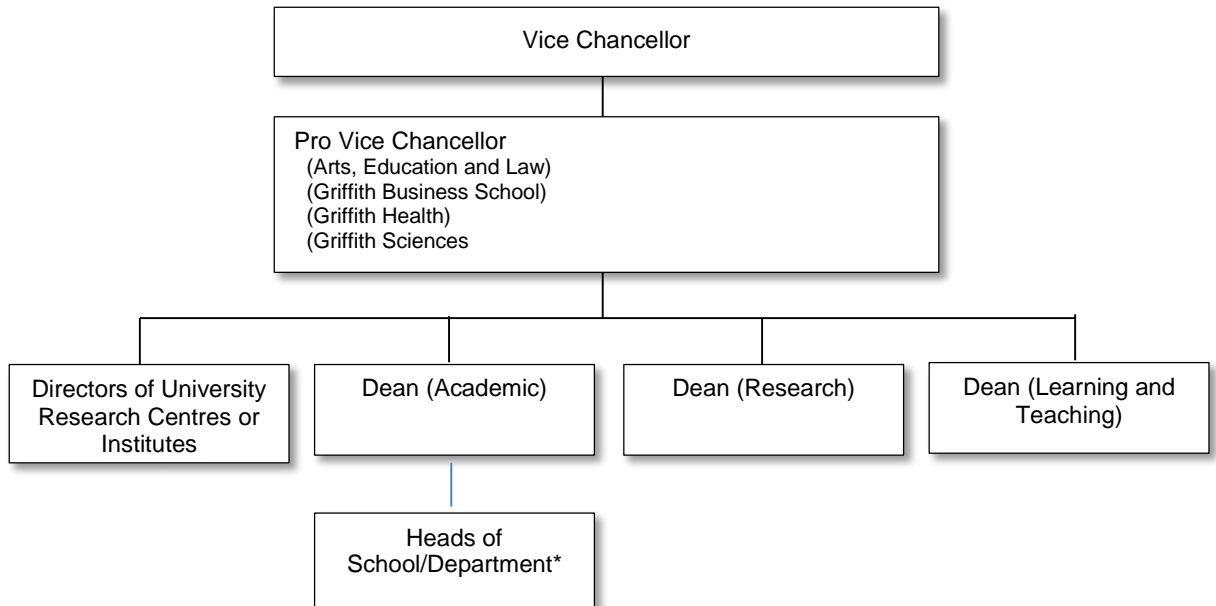
[\[Academic Structure\]](#) [\[List of Academic Elements\]](#) [\[Changes to Academic Structure\]](#) [\[Research Centres and Institutes\]](#)

## 1. ACADEMIC STRUCTURE

The formal academic structure of the University is comprised of academic Groups, schools or departments and research centres.

The leadership and accountabilities of the academic Group structure is given in Figure 1.

Figure 1 - Leadership and Accountabilities



\*Heads of School in the Arts, Education and Law Group report to the Group Pro Vice Chancellor

Each academic group is headed by a Group Pro Vice Chancellor. The Group Pro Vice Chancellor is supported by a Dean (Academic) who is the PVC's standing deputy with responsibility for staffing matters. The Dean (Academic)'s role includes line management of Heads of School or Department unless Council, on the recommendation of the Vice Chancellor, approves otherwise. In each Group there is a portfolio Dean in Learning and Teaching and a portfolio Dean in Research. These officers have responsibility for managing the University's strategy in the Groups in their respective portfolios.

Other group portfolio positions may be established by the Vice Chancellor on the recommendation of the relevant Group Pro Vice Chancellor.

The standard governance structure for academic groups is given in Table 1.

Table 1 Academic Groups – Governance

Strategic & Resource Planning	Staffing	Academic
<p><b>Group Executive</b> PVC - Chair Deans Directors, University Research Centres/Institutes (other members as determined)</p> <p><b>Budget Advisory Group</b> PVC - Chair Deans Group Resource Manager</p>	<p><b>Staff Committee</b> Dean (Academic) - Chair (other members as determined)</p> <p><b>Promotions Committee</b> Dean (Academic) - Chair (other members as determined)</p>	<p><b>Group Board</b> Dean (Academic) - Chair Deans Heads of School/Department Research Centre/Institute Directors or representatives</p> <p><b>Research Committee</b> Dean (Research) - Chair (other members as determined)</p> <p><b>Learning &amp; Teaching Committee</b> Dean (Learning &amp; Teaching) - Chair (other members as determined)</p>

## 2. LIST OF ACADEMIC ELEMENTS

The academic structure of the University is comprised of the following:

### **Academic Groups**

Arts, Education and Law Group

Griffith Business School

Griffith Health

Griffith Sciences

### **Schools**

The list of Schools / Departments of the academic Groups and senior academic manager positions with formal roles and responsibilities set down in policy is set out below:

<b>Academic Group</b>	<b>School/Department</b>	<b>Senior Academic Manager Positions**</b>
Arts, Education and Law	School of Criminology and Criminal Justice	Head, School of Criminology and Criminal Justice
	School of Education and Professional Studies	Head and Dean**, School of Education and Professional Studies
	School of Humanities, Languages and Social Science	Head, School of Humanities, Languages and Social Science
	Griffith Law School	Head and Dean**, Griffith Law School
	Queensland College of Art Griffith Film School	Director, Queensland College of Art Head, Griffith Film School
	Queensland Conservatorium	Director, Queensland Conservatorium
Griffith Business School	Department of Accounting, Finance and Economics	Head, Department of Accounting, Finance and Economics
	Department of Employment Relations and Human Resources	Head, Department of Employment Relations and Human Resources
	Department of International Business and Asian Studies	Head, Department of International Business and Asian Studies
	Department of Marketing	Head, Department of Marketing
	Department of Tourism, Sport and Hotel Management	Head, Department of Tourism, Sport and Hotel Management
	School of Government and International Relations	Head, School of Government and International Relations
Griffith Health	School of Allied Health Sciences	Head, School of Allied Health Sciences
	School of Applied Psychology	Head, School of Applied Psychology
	School of Dentistry and Oral Health	Head and Dean**, School of Dentistry and Oral Health

	School of Human Services and Social Work	Head, School of Human Services and Social Work
	School of Medical Science	Head, School of Medical Science
	School of Medicine	Head and Dean**, School of Medicine
	School of Nursing and Midwifery	Head, School of Nursing and Midwifery
	School of Pharmacy and Pharmacology	Head, School of Pharmacy and Pharmacology
Griffith Sciences	School of Engineering and Built Environment	Head, School of Engineering and Built Environment
	School of Environment and Science	Head, School of Environment and Science
	School of Information and Communication Technology	Head, School of Information and Communication Technology

Other academic manager positions in Schools/Departments are set out in the policy Appointment of Academic Managers.

\*\*Subject to the Vice Chancellor's approval, Heads of School in certain professional areas may be known as 'Dean' for the purposes of external representation, where there is a common practice of such titles being used.

Other elements, such as the Centre for Learning Futures and the Griffith Graduate Research School perform the role of a School when they are the owner element for a course, the host element for a program or the supervisor of Research Higher degree students and the Heads of these elements perform the role of Head of School or Department in those circumstances.

---

### 3. CHANGES TO ACADEMIC STRUCTURE

Changes to the academic structure, including but not confined to changes to Group structure; establishment or disestablishment of Schools or Departments are approved by Council on the recommendation of the Vice Chancellor.

---

### 4. RESEARCH CENTRES AND INSTITUTES

Under the Research Centres and Institutes Policy, Research Centres and Research Institutes are established by the Academic Committee on the recommendation of the Research Committee. Directors of University Research Centres and Research Institutes report to the Group Pro Vice Chancellor or nominee. The Academic Committee approves the disestablishment of Griffith Research Centres or Research Institutes, on the recommendation of the Research Committee.